

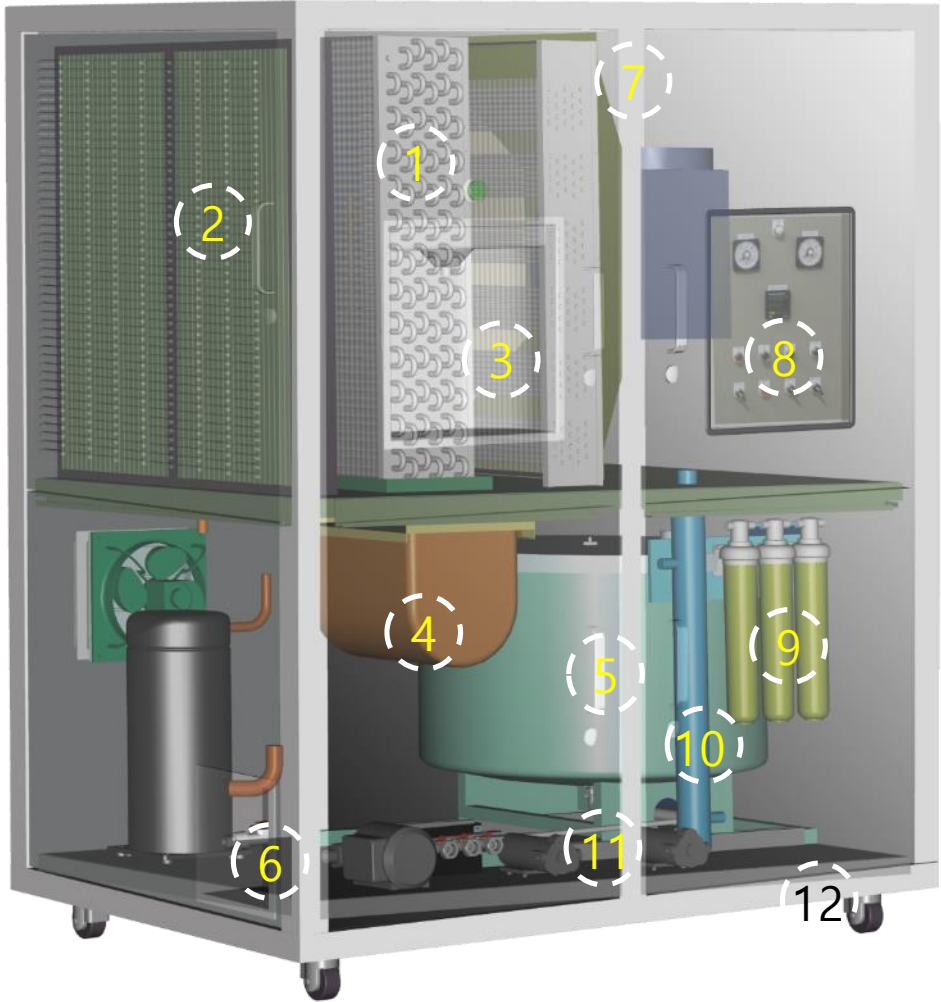
Product information AW250



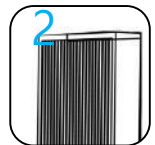
1. Description ----- Large Scale Atmospheric Water System
2. Dimension --1,700 mm(W) x 1,400 mm(D) x 1,940 mm(H)
3. Weight ----- 980 kg
4. Rated Power ----- 380 VAC 3 phase
5. Power Consumption ----- 12 KW
6. Refrigerant ----- R-410A
7. Water making capacity ----- 300 ~ 1,000 liters / day
8. Maintenance ----- Air filter (Replace every 3 months)
 AWG Air-dew Filter sets (Replace every 6 months)
 Sterilization filter system (Replace every 1 year)

| Relative Humidity (liters / day) | | | | | | |
|------------------------------------|------|-----|------|-----|-----|-----|
| Temp | 40 % | 50% | 60% | 70% | 80% | 90% |
| 15 °C | | 192 | 312 | 408 | 528 | 624 |
| 25 °C | 288 | 384 | 552 | 720 | 830 | 936 |
| 30 °C | 384 | 504 | 600 | 744 | 840 | 960 |
| 40 °C | 672 | 840 | 1008 | | | |

Product information AW250



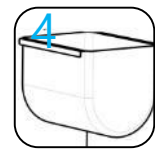
1
Stainless Steel



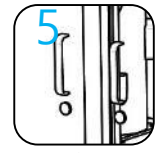
2
PM2.5 HEPA



3
Smart Switch



4
Easy Access



5
Safety Lock



6
Auxiliary Tank



7
Water Proof



8
Network Monitor (Option)



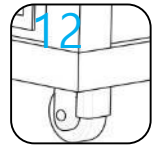
9
AD Water Filter



10
UV Sterilizer



11
Sliding Door



12
Moving Caster