



Model AW 250G



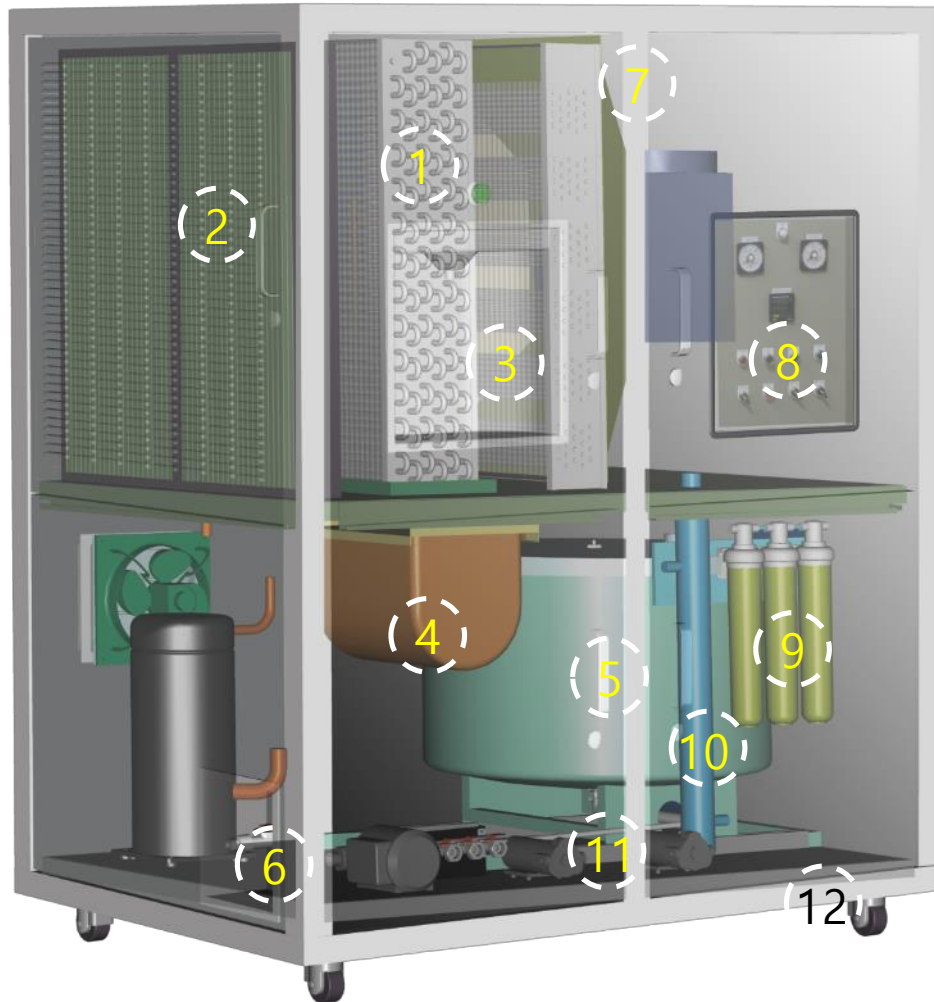
Product Information AW 250G



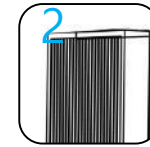
1. Description ----- Large Scale Atmospheric Water System
2. Dimension --1,700 mm(W) x 1,400 mm(D) x 1,940 mm(H)
3. Weight ----- 980 kg
4. Rated Power ----- 380 VAC 3 phase
5. Power Consumption ----- 12 KW
6. Refrigerant ----- R-410A
7. Water making capacity ----- 300 ~ 1,000 liters / day
8. Maintenance ----- Air filter (Replace every 3 months)
 AWG Air-dew Filter sets (Replace every 6 months)
 Sterilization filter system (Replace every 1 year)

Relative Humidity (liters / day)						
Temp	40 %	50%	60%	70%	80%	90%
15 °C		192	312	408	528	624
25 °C	288	384	552	720	830	936
30 °C	384	504	600	744	840	960
40 °C	672	840	1008			

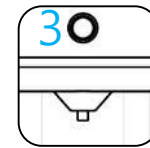
Product information AW 250G



1
Stainless Steel



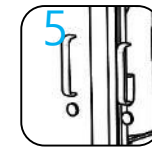
2
PM2.5 HEPA



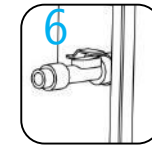
3
Smart Switch



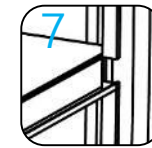
4
Easy Access



5
Safety Lock



6
Auxiliary Tank



7
Water Proof



8
Network Monitor (Option)



9
AD Water Filter



10
UV Sterilizer



11
Sliding Door



12
Moving Caster